

### Introduction

This catalog is designed to identify **Wisconsin Robin** parts.

When ordering parts, it is always advisable to list the engine model, specification number and serial number. With this information, we can check your order for any incorrect part numbers. Use your Service Parts List to ensure proper part number and nomenclature identification.

**TELEDYNE TOTAL POWER** reserves the right to modify, alter and improve engines and parts. Part numbers and the structure of parts may change from those shown in this catalog.

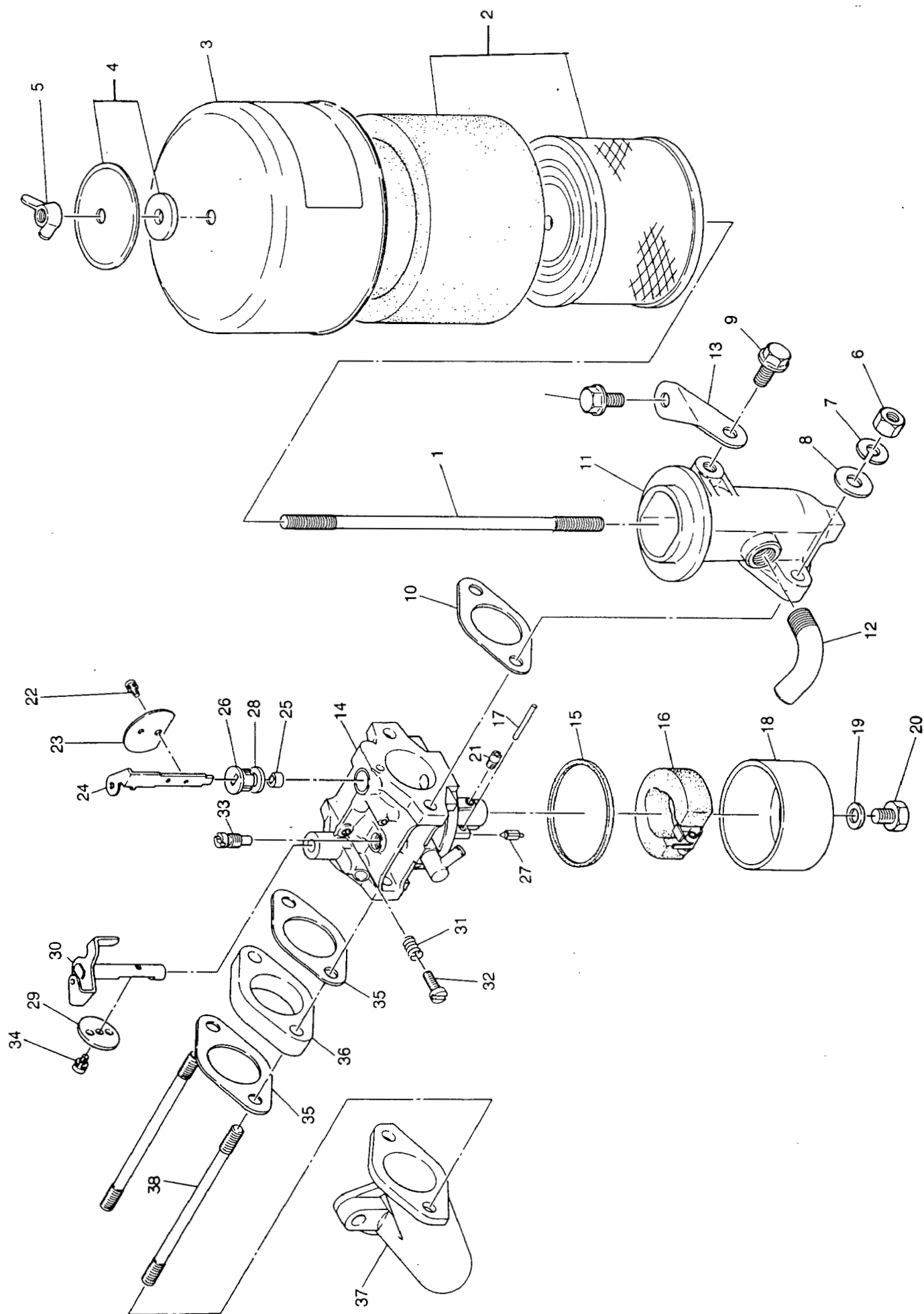
### Table of Contents

Air Cleaner and Carburetor .....	3-5
Governor and Speed Control .....	7
Fuel Tank .....	9
Shrouding and Muffler .....	11
Crankcase, Gear Cover and Cylinder Head .....	13-17
Crankshaft, Camshaft, Piston, Rod and Valve .....	21-23
Flywheel Brake .....	25
Ignition .....	27
Recoil Starter (W1-145V only) .....	29
Recoil Starter (W1-185V only) .....	31

— — — — : Indicates there are different numbers for each engine model.

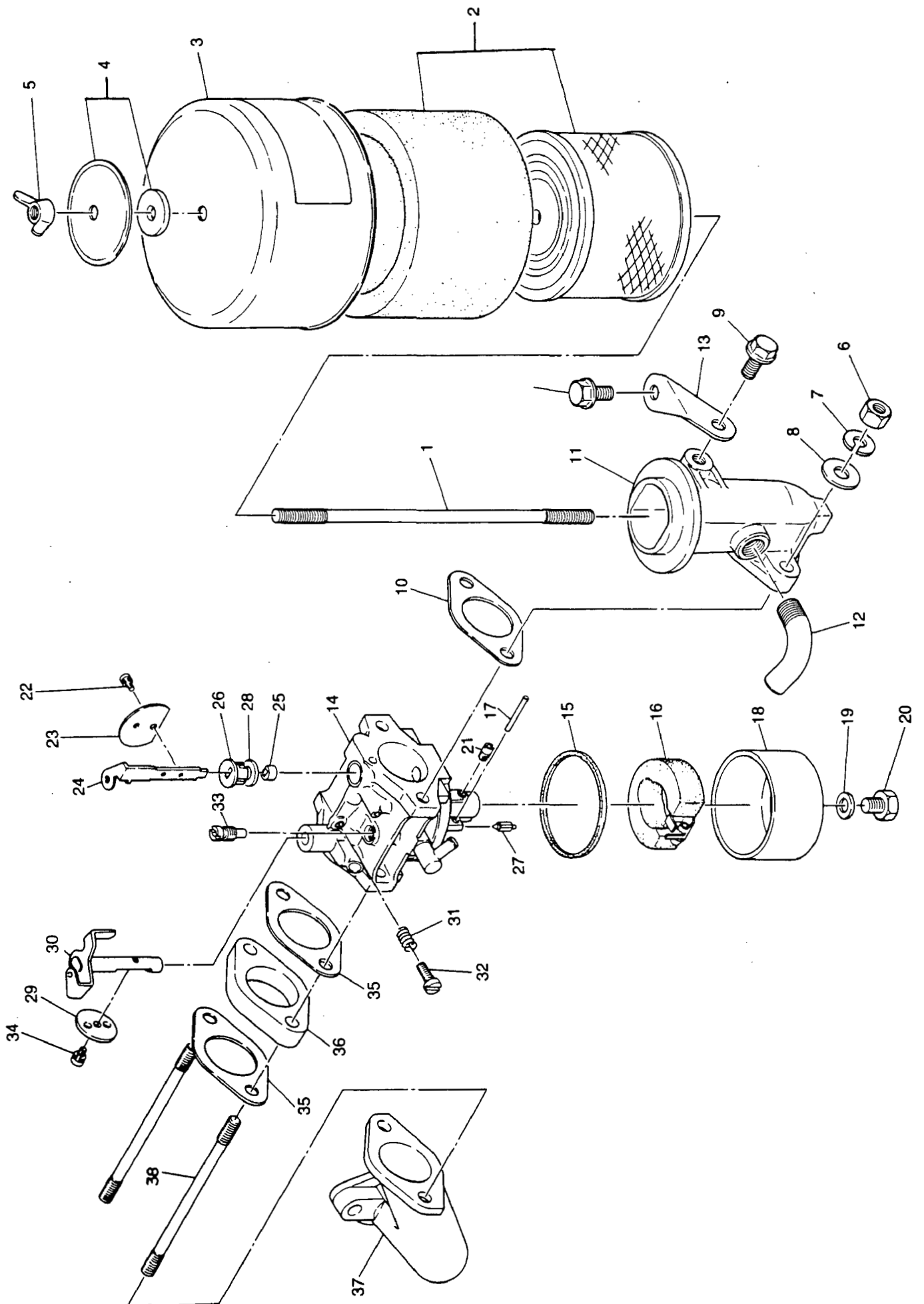
X X X X : Indicates that these parts are NOT sold separately.

All parts numbers are valid for both engines unless otherwise noted.



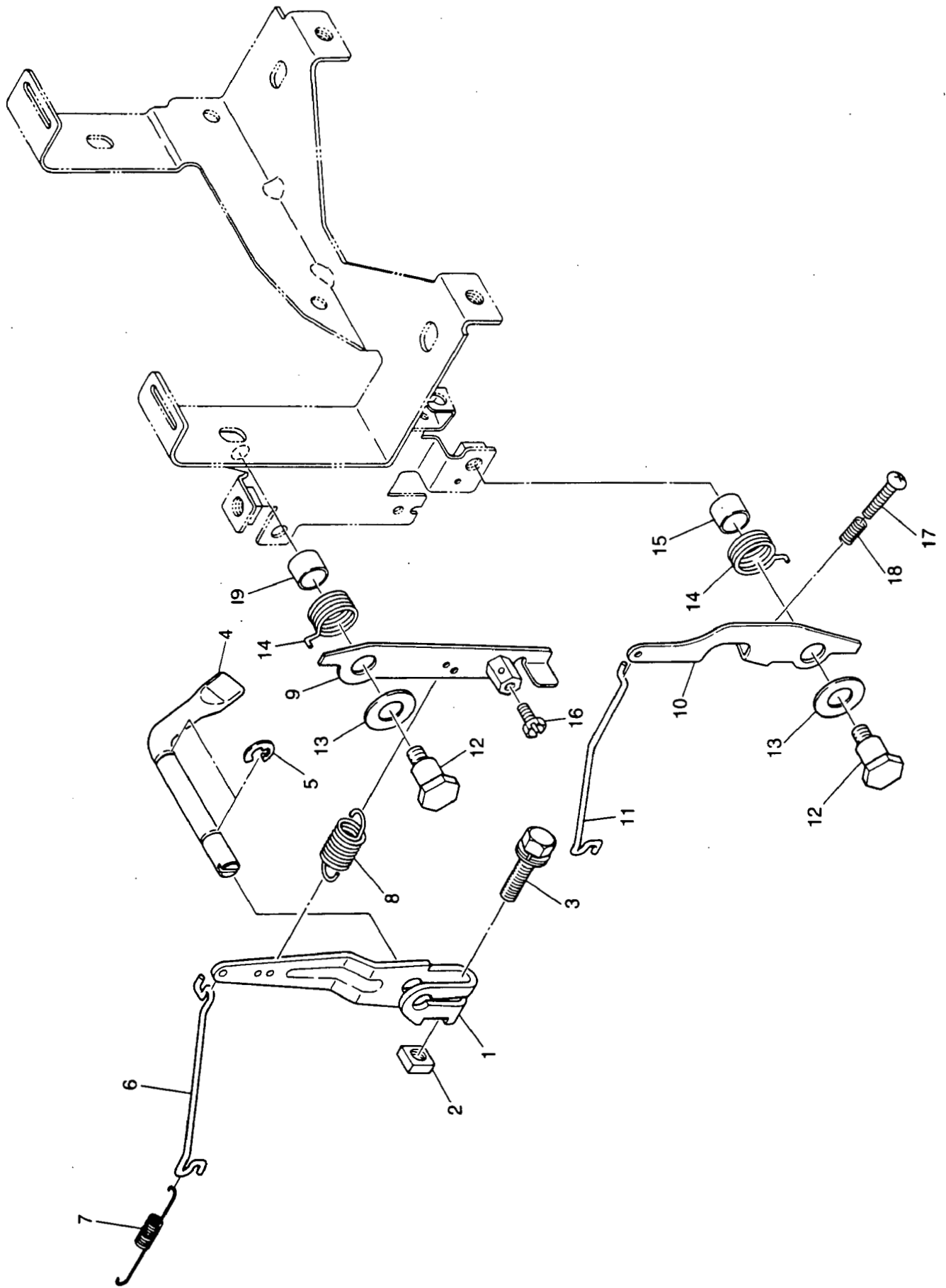
1. AIR CLEANER AND CARBURETOR GROUP

REF. NO.	PART NO.	DESCRIPTION	QTY.
	EY227 32801 00	AIR CLEANER ASSY. (Includes items 2,3,& 4)	1
1-1	EY010 50602 20	STUD, BODY COVER MOUNTING	1
2	EY227 32801 07	ELEMENT SET, AIR CLEANER	1
3	X X X X X X X	COVER, AIR CLEANER	1
4	EY227 32660 08	WASHER SET, MOUNTING	1
5	EY224 32740 08	WING NUT, COVER	1
6	EY002 27060 00	NUT, BODY MOUNTING	2
7	EY003 20060 00	LOCK WASHER, BODY MOUNTING	2
8	EY003 11060 00	WASHER, BODY MOUNTING	2
		PLAIN STEEL	
9	EY011 00600 20	SCREW, AIR CLEANER BODY SUPPORT, 6mm x 14mm LONG, HEX FLANGE HEAD	2 2
10	EY227 35901 03	GASKET, AIR CLEANER BODY	1
11	EY227 33201 01	ELBOW COMPLETE	1
12	EY226 39201 01	PIPE (UNION)	1
13	EY227 36521 01	SUPPORT	1
14	- - - - -	CARBURETOR ASSY. (Includes items 15-34)	1
	EY226 62403 00	FOR MODEL W1-145V	
	EY227 62404 00	FOR MODEL W1-185V	
15	X X X X X X X	GASKET, FLOAT CHAMBER	1
16	EY226 62506 08	FLOAT ASSY.	1
17	X X X X X X X	FLOAT PIN	1
18	X X X X X X X	FLOAT CHAMBER	1
19	X X X X X X X	GASKET, FLOAT CHAMBER SCREW	1
20	X X X X X X X	SCREW, FLOAT CHAMBER MOUNTING	1
21	- - - - -	MAIN JET	1
	EY226 62400 08	FOR MODEL W1-145V #75	
	EY227 62400 08	FOR MODEL W1-185V #82.5	
22	EY226 62351 08	SCREW, CHOKE VALVE, 2.6mm x 4mm LONG, PAN HEAD	2
23	EY226 62525 08	CHOKE VALVE	1



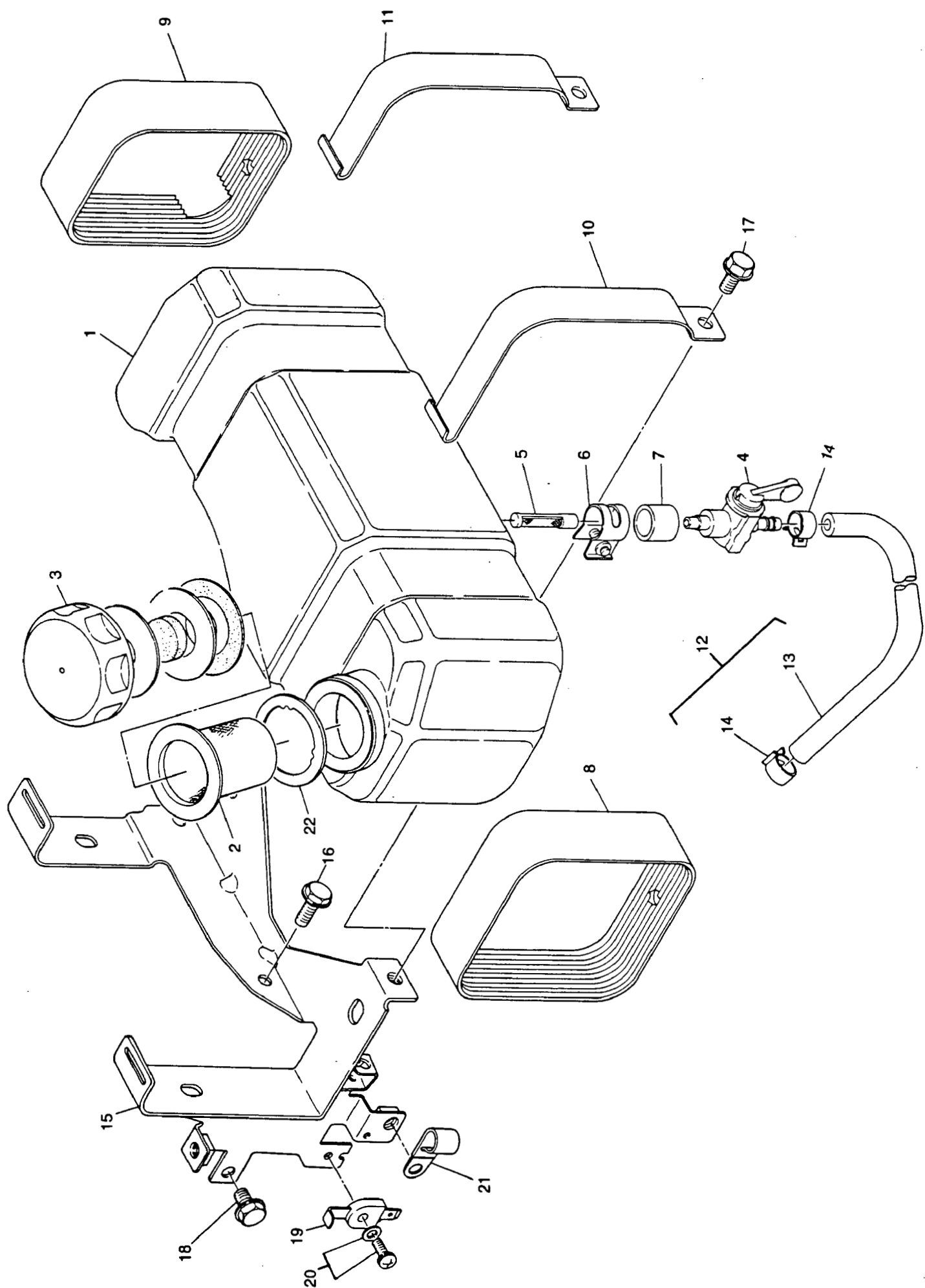
1. AIR CLEANER CARBURETOR GROUP

REF. NO.	PART NO.	DESCRIPTION	QTY.
1-24	EY226 62521 08	CHOKE LEVER	1
25	EY226 62550 08	BUSHING, CHOKE SHAFT LOWER	1
26	EY226 62551 08	BUSHING, CHOKE SHAFT UPPER	1
27	EY226 62500 08	NEEDLE VALVE	1
28	EY227 62550 08	CHOKE LEVER SEAL	1
29	- - - - -	THROTTLE VALVE	1
	EY226 62535 08	FOR MODEL W1-145V	
	EY106 62538 08	FOR MODEL W1-185V	
30	EY226 62531 08	THROTTLE SHAFT	1
31	EY209 62445 08	SPRING, THROTTLE STOP SCREW	1
32	EY226 62352 08	SCREW, THROTTLE STOP	1
33	- - - - -	PILOT JET	1
	EY207 62420 08	FOR MODEL W1-145V	
	EY227 62420 08	FOR MODEL W1-185V	
34	EY150 62356 08	SCREW, THROTTLE VALVE MOUNTING, 3mm x 5mm LONG, PAN HEAD	1
35	X X X X X X X	GASKET, CARBURETOR, FLANGE	2
36	EY227 32901 03	INSULATOR, CARBURETOR FLANGE	1
37	- - - - -	MANIFOLD, INTAKE, (Includes item 38)	1
	EY226 34801 01	FOR MODEL W1-145V	
	EY227 33101 01	FOR MODEL W1-185V	
38	EY010 50601 40	STUD, CARBURETOR, 6mm x 90mm LONG	2
	EY226 62405 07	REPAIR KIT, CARBURETOR	1



2. GOVERNOR AND SPEED CONTROL GROUP

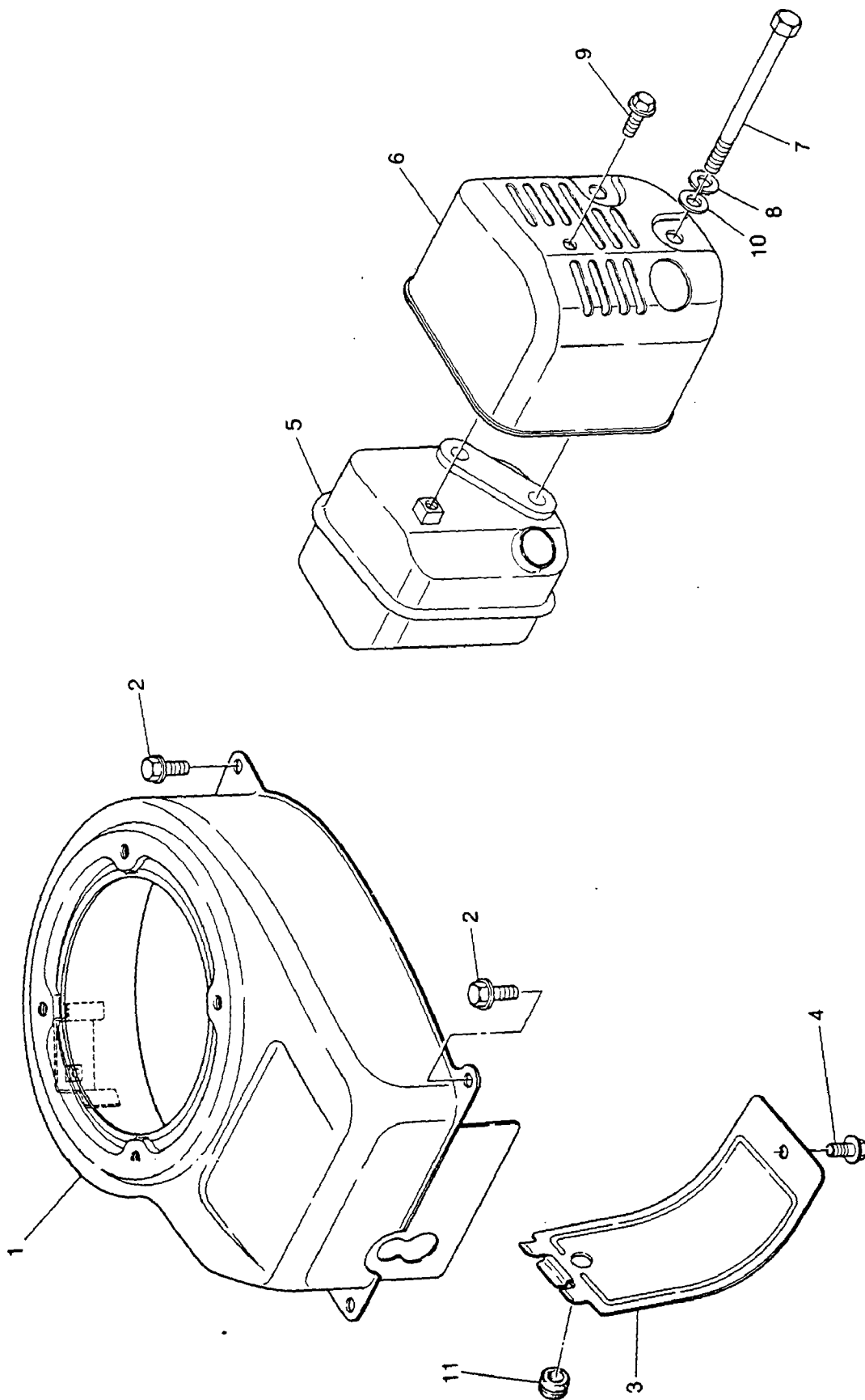
REF. NO.	PART NO.	DESCRIPTION	QTY.
	- - - - -	GOVERNOR LEVER AND SHAFT SET	1
	EY226 42302 07	FOR MODEL W1-145V	
	EY227 42331 07	FOR MODEL W1-185V	
		(Includes items 1-5)	
2-1	X X X X X X X	GOVERNOR LEVER	1
2	X X X X X X X	NUT, GOVERNOR LEVER, 6mm	1
		THREAD, SQUARE STEEL	
3	X X X X X X X	SCREW, GOVERNOR LEVER CLAMP,	1
		6mm x 25mm LONG, HEX HEAD	
4	X X X X X X X	GOVERNOR CROSS SHAFT	1
5	X X X X X X X	CLIP, SHAFT RETAINER, 6mm	2
		I.D. x 12mm O.D.	
	EY226 42506 07	GOVERNOR SPRING AND ROD SET	1
		(Includes items 6-8)	
6	X X X X X X X	GOVERNOR ROD	1
7	EY226 42801 01	SPRING, GOVERNOR ROD	1
8	EY227 42504 01	GOVERNOR SPRING	1
9	EY226 42505 07	CONTROL LEVER SET, GOVERNOR	1
		(Includes items 10-13)	
10	EY227 43801 11	CONTROL LEVER, CHOKE	1
11	X X X X X X X	ROD, CHOKE CONTROL	1
12	X X X X X X X	PIVOT PIN, CONTROL LEVERS	2
13	X X X X X X X	WASHER, CONTROL LEVER,	2
		FRICTION	
	- - - - -	RETURN SPRING SET, GOVERNOR	1
	EY226 42504 17	FOR MODEL W1-145V	
	EY227 45002 07	FOR MODEL W1-185V	
		(Includes items 14,15,17,& 18)	
14	X X X X X X X	SPRING, LEVER RETURN	2
15	X X X X X X X	SPACER, CHOKE AND CONTROL	2
16	EY011 60400 10	SCREW, CONTROL WIRE LOCK,	1
		4mm x 14mm LONG, HEX HEAD	
17	X X X X X X X	SCREW, CHOKE R.P.M. CONTROL,	1
		4mm x 20mm LONG, PAN HEAD	
18	X X X X X X X	SPRING, CHOKE R.P.M. CONTROL	1
19	EY023 01000 70	SPACER	1



3. FUEL TANK GROUP

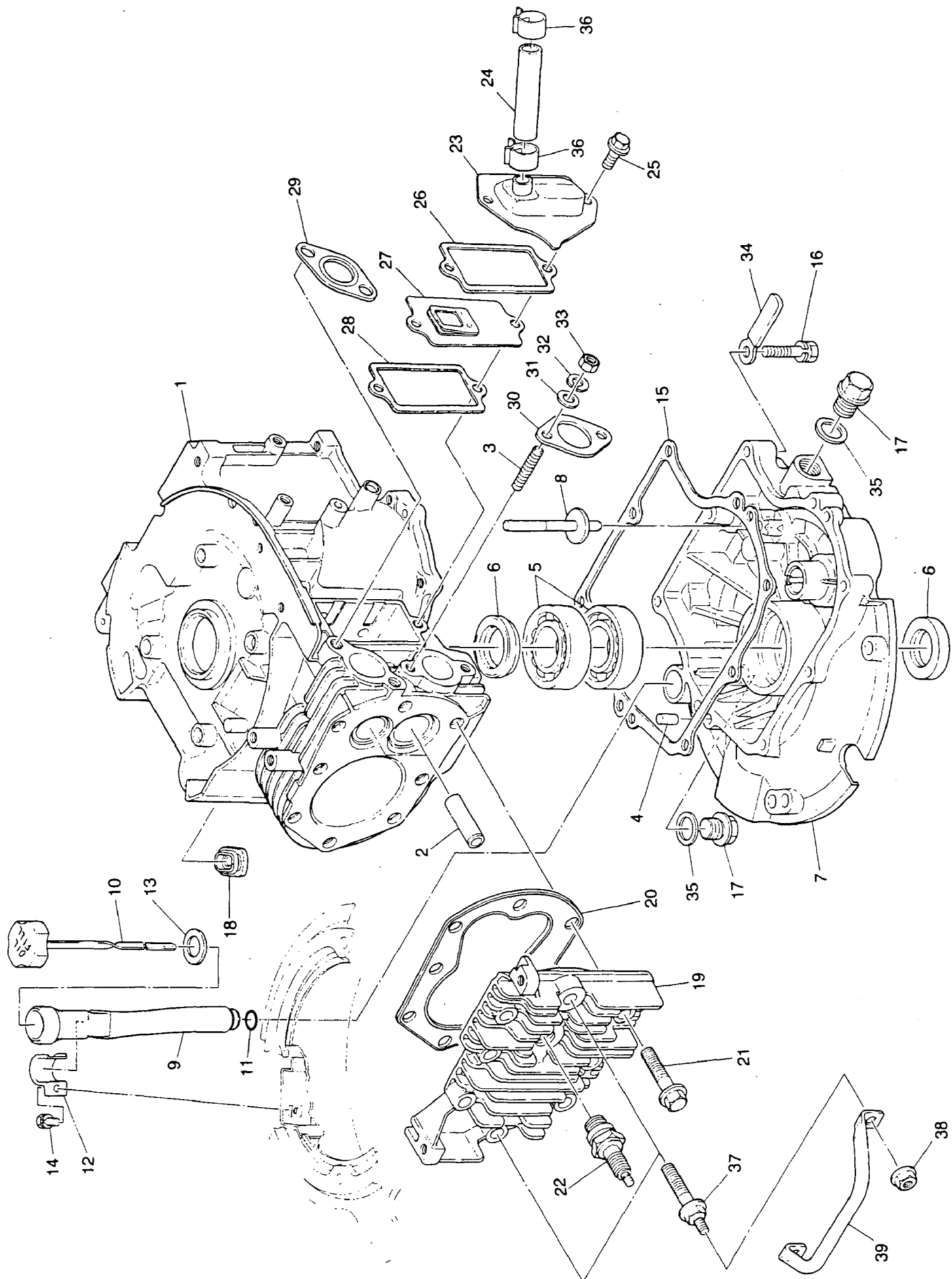


REF. NO.	PART NO.	DESCRIPTION	QTY.
3-1	EY226 61401 01	FUEL TANK ASSY. (Includes item 3)	1
2	EY064 13100 20	FUEL TANK FILTER	1
3	EY043 04400 70	CAP WITH GASKET	1
4	EY064 20044 02	FUEL STRAINER ASSY. (Includes items 5-7)	1
5	X X X X X X X	FILTER SCREEN	
6	X X X X X X X	CLAMP, STRAINER SUPPORT	
7	X X X X X X X	TUBE, STRAINER SUPPORT	
8	EY226 65105 03	BAND, TANK SUPPORT, LARGE	1
9	EY226 65106 03	BAND, TANK SUPPORT, SMALL	1
10	EY226 65011 01	STRAP, TANK BAND, LONG	1
11	EY226 65012 01	STRAP, TANK BAND, SHORT	1
12	EY226 63623 01	FUEL LINE ASSY. (Includes items 13 & 14)	1
13	X X X X X X X	HOSE	1
14	X X X X X X X	HOSE CLAMP	2
15	- - - - -	BRACKET, FUEL TANK FOR MODEL W1-145V	1
	EY226 62001 01	FOR MODEL W1-185V	
16	EY227 62113 01	SCREW, TANK BRACKET MOUNTING 6mm x 14mm LONG, HEX FLANGE HEAD	2
17	EY011 00600 20	SCREW, FUEL TANK STOP, 6mm x 12mm LONG, HEX FLANGE HEAD	2
18	EY011 00600 10	SCREW, TANK BRACKET MOUNTING 6mm x 12mm LONG, HEX FLANGE HEAD	2
19	EY226 72701 03	STOP SWITCH	1
20	EY004 35041 20	SCREW/WASHER, STOP SWITCH MOUNTING 4mm x 12mm LONG, PAN HEAD	1
21	EY214 79006 01	CLAMP COMPLETE, STOP WIRE	1
22	EY084 04200 10	GASKET, FUEL FILTER	1



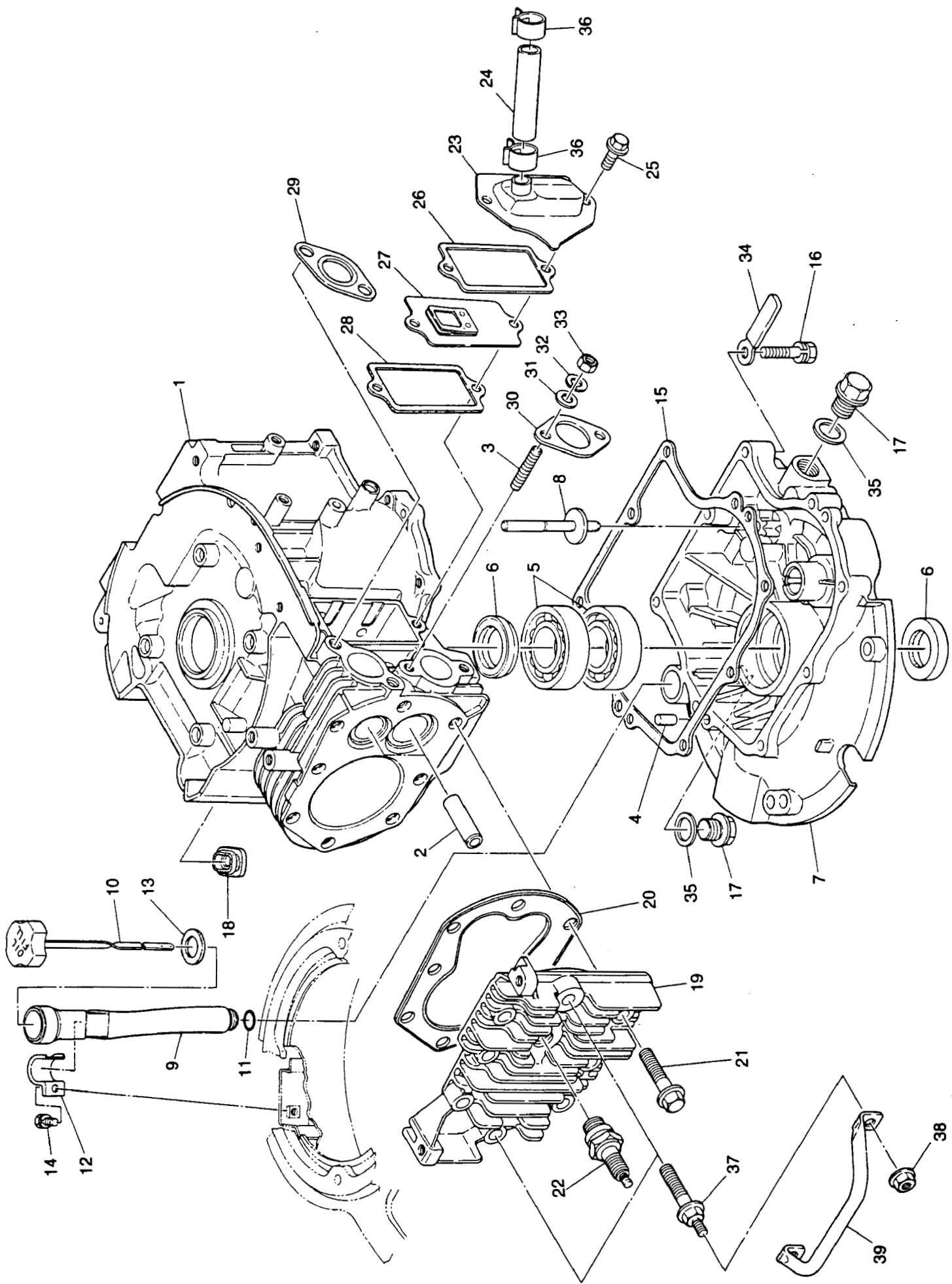
4. SHROUDING AND MUFFLER GROUP

REF. NO.	PART NO.	DESCRIPTION	QTY.
4-1	- - - - -	FLYWHEEL SHROUD	1
	EY226 52321 01	FOR MODEL W1-145V	
	EY227 52321 01	FOR MODEL W1-185V	
2	EY011 00600 20	SCREW, FLYWHEEL SHROUD MOUNTING, 6mm x 12mm HEX FLANGE HEAD	4
3	- - - - -	BAFFLE, CYLINDER	1
	EY226 52603 03	FOR MODEL W1-145V	
	EY227 52604 03	FOR MODEL W1-185V	
4	EY011 00600 10	SCREW, CYLINDER BAFFLE MOUNTING, 6mm x 8mm LONG, HEX FLANGE HEAD	1
5	- - - - -	EXHAUST MUFFLER	1
	EY226 31201 11	FOR MODEL W1-145V	
	EY227 31101 01	FOR MODEL W1-185V	
6	- - - - -	COVER, MUFFLER	1
	EY226 34220 01	FOR MODEL W1-145V	
	EY227 34501 01	FOR MODEL W1-185V	
7	- - - - -	SCREW, MUFFLER MOUNTING 8mm x 100mm LONG, HEX HEAD	2
	EY010 00803 00	FOR MODEL W1-145V	
	EY010 00803 20	FOR MODEL W1-185V	
8	EY003 20080 00	LOCKWASHER, MUFFLER MOUNTING 8mm SPRING LOCK	2
9	EY011 00600 10	SCREW, MUFFLER COVER MOUNTING 6mm x 8mm LONG, HEX FLANGE HEAD	1
10	EY003 10080 00	WASHER, 8mm	2
11	EY024 10300 30	GROMMET	1



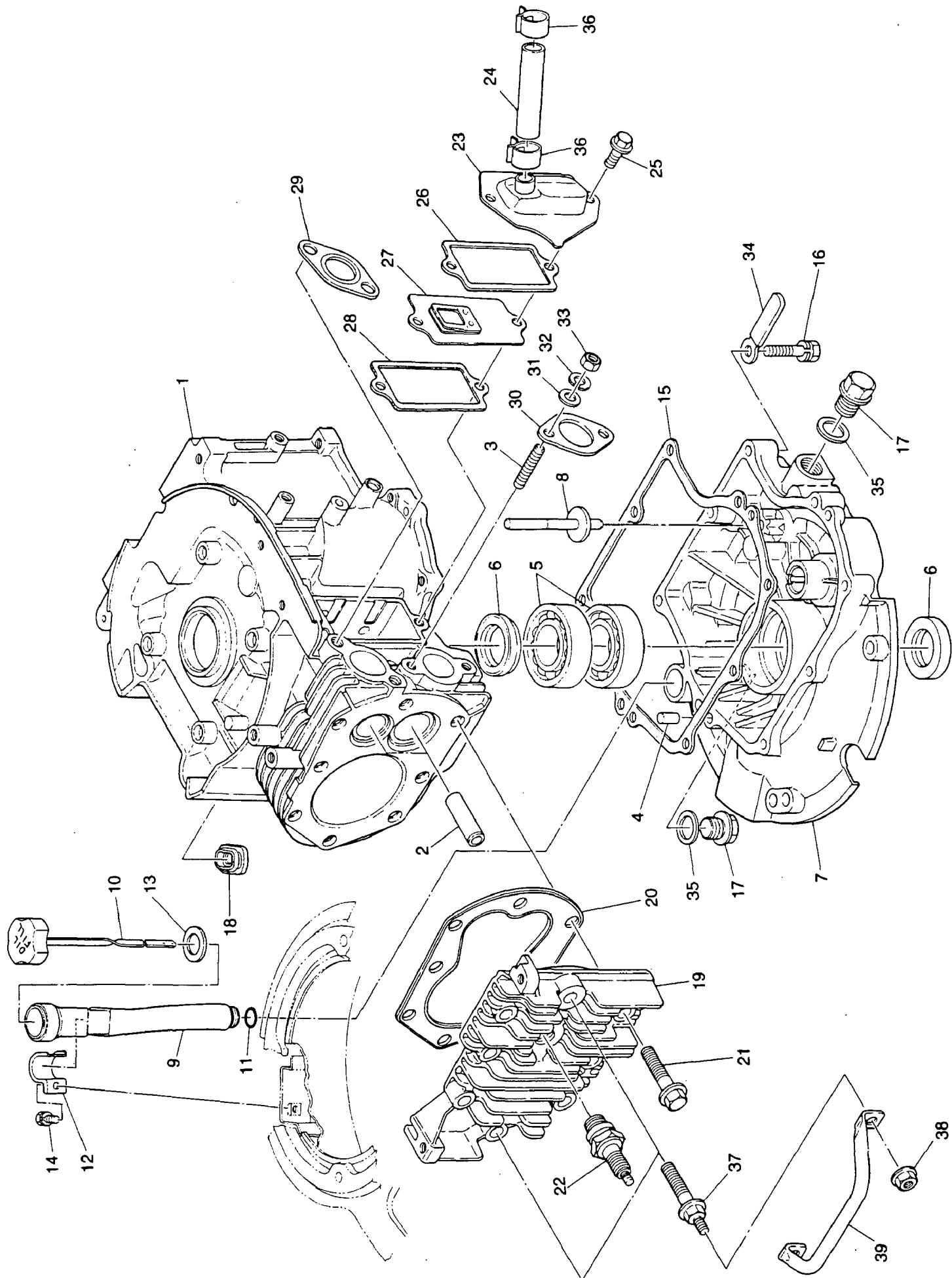
5. CRANKCASE, GEAR COVER AND CYLINDER HEAD GROUP WI-145V/WI-185V

REF. NO.	PART NO.	DESCRIPTION	QTY.
5-1	EY226 10801 01	CYLINDER, CRANKCASE FOR MODEL W1-145V	1
2	EY227 14202 03	VALVE GUIDE FOR MODEL W1-145V	2
3	EY010 50601 31	STUD, INTAKE MANIFOLD, MOUNTING, 6mm x 33mm LONG	2
4	EY031 00600 10	DOWEL PIN	1
5	EY060 02500 10	BEARING, CRANKSHAFT MAIN	2
6	EY044 02500 70	OIL SEAL, CRANKCASE, GEAR COVER	2
7	EY226 11203 01	GEAR COVER ASSY. (Includes items 5,6 & 8)	1
8	X X X X X X X	SHAFT, GOVERNOR GEAR	1
9	EY226 63707 03	OIL FILLER TUBE	1
10	EY226 63602 01	OIL DIPSTICK	1
11	EY006 26101 50	OIL FILLER O-RING	1
12	EY226 67001 03	CLAMP (OIL FILLER)	1
13	EY021 31800 10	GASKET	1
14	EY001 10061 00	BOLT & WASHER ASSY.	1
15	X X X X X X X	GASKET, GEAR COVER	1
16	EY013 00600 40	SCREW/WASHER, GEAR COVER MOUNTING, 6mm x 30mm LONG, HEX HEAD	8
17	EY227 63600 07	OIL DRAIN PLUG WITH GASKET	2
18	EY227 75001 03	GROMMET, IGNITION WIRE MODEL W1-145V ONLY	1
19	EY226 13301 13	CYLINDER HEAD FOR MODEL W1-145V	1
20	EY226 15001 11	GASKET, CYLINDER HEAD FOR MODEL W1-145V	1
21	X X X X X X X X	SCREW, CYLINDER HEAD MOUNTING 8mm x 49mm FLANGE HEAD	8
22	EY065 01403 70 (OPTIONAL)	SPARK PLUG, WITH GASKET NGK BM4A, CHAMPION CJ14	1
23	EY226 16001 01	COVER, VALVE TAPPET	1
24	EY085 10800 00	TUBE, INSPECTION COVER BREATHER	1



5. CRANKCASE, GEAR COVER AND CYLINDER HEAD GROUP — WI-145V/WI-185V

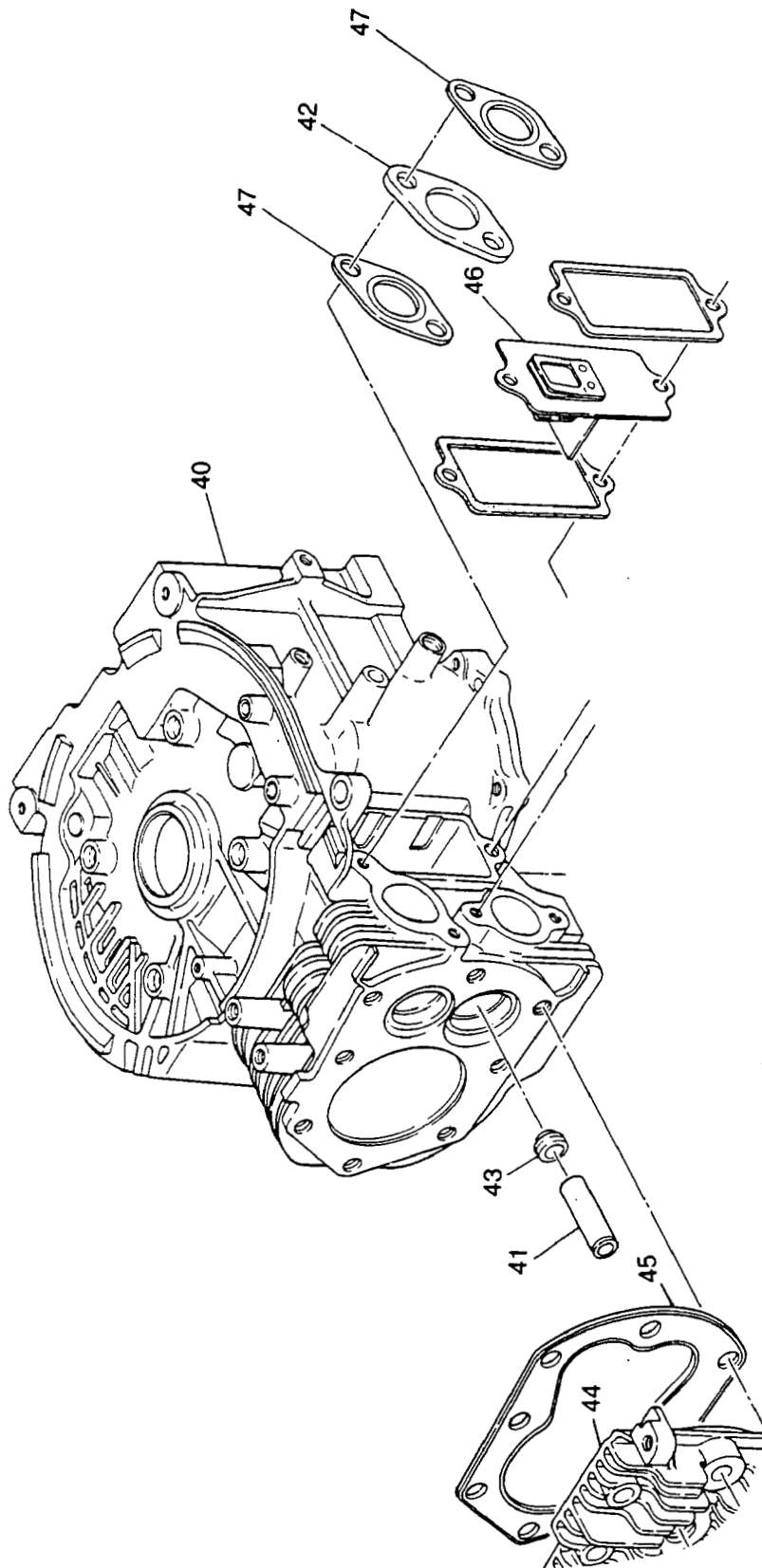
REF. NO.	PART NO.	DESCRIPTION	QTY.
5-25	EY011 00600 20	SCREW, TAPPET COVER 6mm x 12mm LONG, HEX FLANGE HEAD	2
26	X X X X X X X X	GASKET, TAPPET COVER	1
27	EY226 16101 01	BREATHER PLATE FOR MODEL W1-145V	1
28	X X X X X X X X	GASKET, BREATHER PLATE	1
29	EY226 35201 11	GASKET, MUFFLER MOUNTING FOR MODEL W1-145V	1
30	X X X X X X X X	GASKET, INTAKE MANIFOLD FLANGE	1
31	EY003 11060 00	WASHER, INTAKE MANIFOLD FLANGE 6.4 I.D. x 11.5 O.D. PLAIN STEEL	1
32	EY003 20060 00	LOCKWASHER, MANIFOLD MOUNTING 6mm SPRING LOCK	2
33	EY002 27060 00	NUT, INTAKE MANIFOLD MOUNTING 6mm THREAD, HEX STEEL	2
34	EY226 75101 03	CLAMP, FUEL LINE SUPPORT	1
	EY226 99006 07	ENGINE GASKET SET (FOR MODEL W1-145V) Includes the following:	1
		GEAR COVER (Ref. 15)	1
		CYLINDER HEAD (Ref. 20)	1
		TAPPET COVER (Ref. 26)	1
		BREATHER PLATE (Ref. 28)	1
		MUFFLER MOUNTING (Ref. 29)	1
		CARBURETOR INTAKE MANIFOLD (Ref. 30)	1
		OIL FILLER O-RING (Ref. 11)	1
		OIL DIPSTICK GASKET (Ref. 13)	1
		OIL SEAL DRAIN PLUG (Ref. 35)	2
	EY227 99004 07	ENGINE GASKET SET FOR MODEL W1-185V Includes the following:	1
		GEAR COVER (Ref. 15)	1
		CYLINDER HEAD (Ref. 20)	1
		TAPPET COVER (Ref. 26)	1
		BREATHER PLATE (Ref. 28)	1
		CARBURETOR INTAKE MANIFOLD (Ref. 30)	1
		MUFFLER MOUNTING (Ref. 29)	2
		OIL DIPSTICK GASKET (Ref. 13)	1
		OIL SEAL DRAIN PLUG (Ref. 35)	2
		OIL FILLER O-RING (Ref. 11)	1



5. CRANKCASE, GEAR COVER AND CYLINDER HEAD GROUP WI-145V/WI-185V

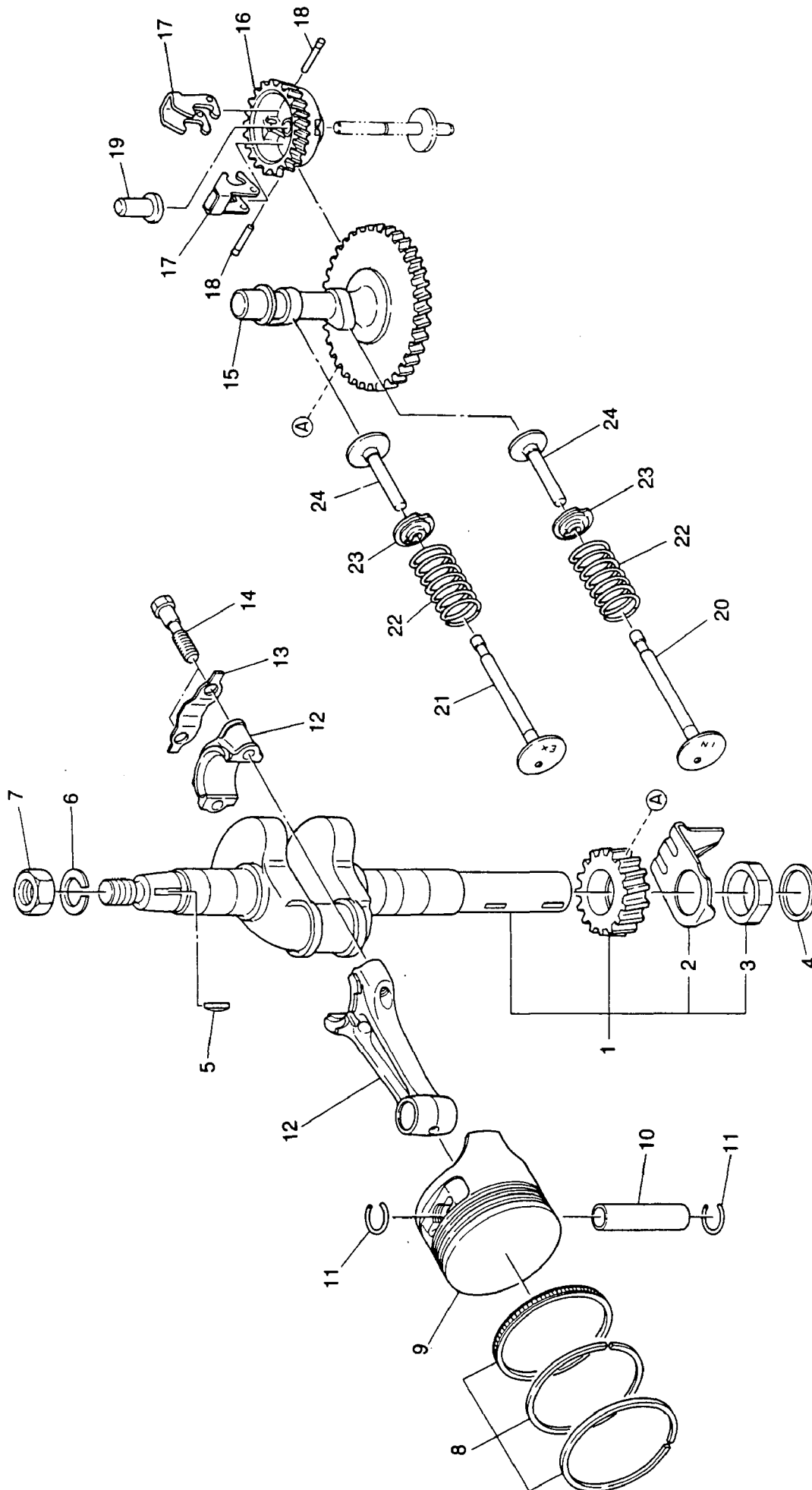


REF. NO.	PART NO.	DESCRIPTION	QTY.
5-35	EY021 11400 20	OIL SEAL, DRAIN PLUG	2
36	EY056 11200 40	HOSE CLAMP	2
37	EY226 17001 01	BOLT	2
38	EY002 38060 00	FLANGE NUT	2
39	EY226 77510 01	PLUG GUARD	1



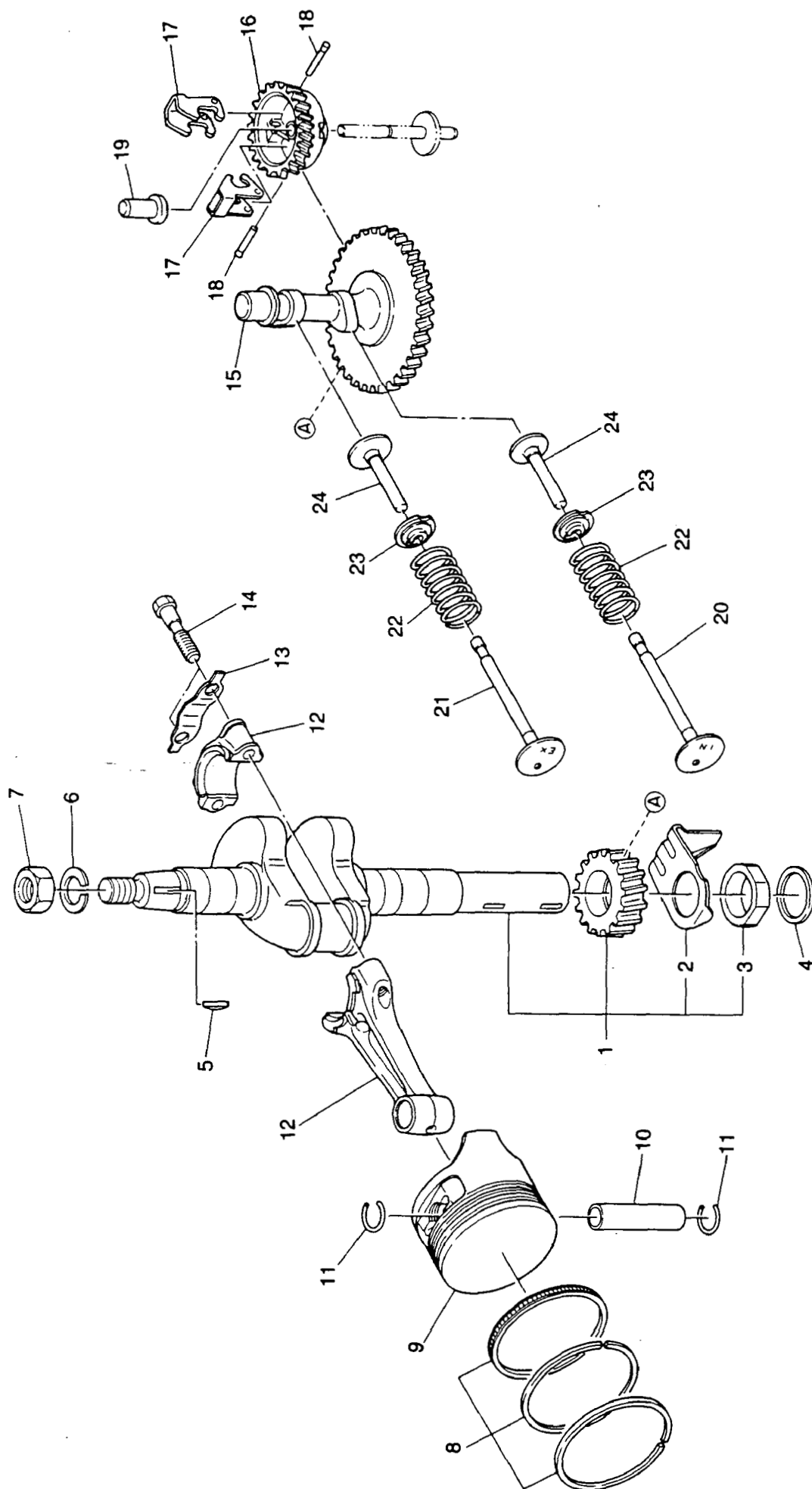
5A. PARTS ABOVE WI-185V ONLY.

REF. NO.	PART NO.	DESCRIPTION	QTY.
5A-40	EY227 10301 01	CYLINDER, CRANKCASE FOR MODEL W1-185V	1
41	EY227 14204 03	VALVE GUIDE FOR MODEL W1-185V	2
42	EY227 36511 03	EXHAUST FLANGE FOR MODEL W1-185V	1
43	EY227 16301 03	OIL SEAL, INTAKE VALVE FOR MODEL W1-185V	1
44	EY227 13301 03	CYLINDER HEAD FOR MODEL W1-185V	1
45	EY227 15001 11	GASKET, CYLINDER HEAD FOR MODEL W1-185V	1
46	EY227 16101 01	BREATHER PLATE FOR MODEL W1-185V	1
47	EY214 35201 11	GASKET, MUFFLER MOUNTING FOR MODEL W1-185V	2



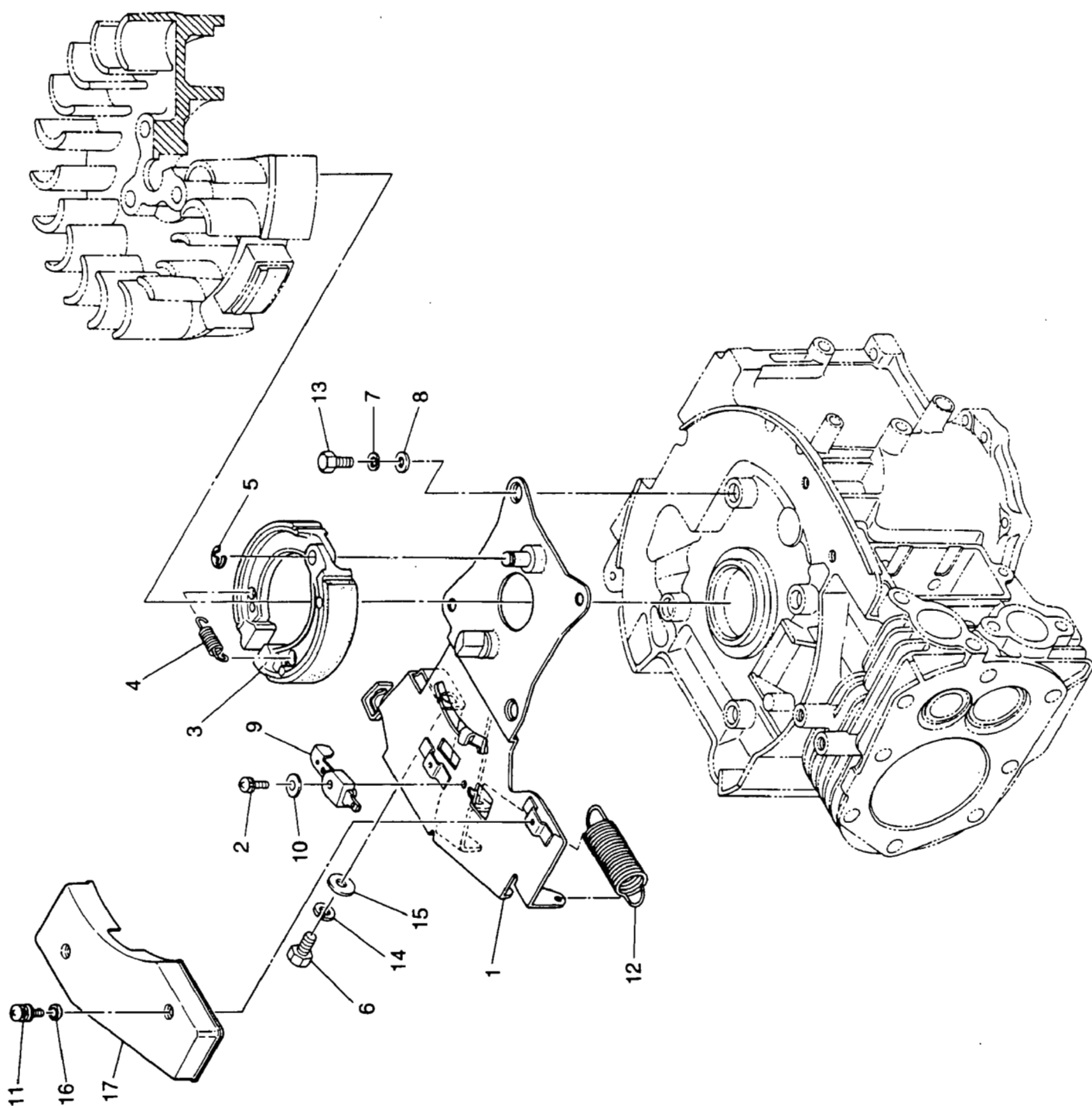
6. CRANKSHAFT, CAMSHAFT, PISTON, ROD AND VALVE GROUP.

REF. NO.	PART NO.	DESCRIPTION	QTY.
6-1	- - - - -	CRANKSHAFT, ASSY. (Includes items 2 & 3) T.O. LENGTH, 2.72" (69.1mm)	1
	EY226 25001 01	FOR MODEL W1-145V	
	EY227 25001 01	FOR MODEL W1-185V	
2	EY226 23102 03	SCRAPER, CRANKSHAFT, OIL	1
3	EY226 26001 03	LOCK, OIL SCRAPER	1
4	EY023 02501 10	SHIM "A" .021 to .026" THICK	1
	EY023 02501 20	SHIM "B" .028 to .0343" THICK	
	EY023 02501 30	SHIM "C" .036 to .0425" THICK	
5	EY032 30300 10	KEY, FLYWHEEL, 3mm, WOODRUFF	1
6	EY003 20140 00	LOCKWASHER, FLYWHEEL NUT, 14mm SPRING LOCK	1
7	EY002 18140 00	NUT, FLYWHEEL MOUNTING, 14mm THREAD, HEX STEEL	1
8	- - - - -	RING SET, STANDARD SIZE	1
	EY226 23501 07	FOR MODEL W1-145V	
	EY227 23501 07	FOR MODEL W1-185V	
		Includes the following:	
		COMPRESSION RING	1
		SCRAPER RING	1
		OIL RING	1
		.010" (0.25mm) OVERSIZE RING SET	
	EY226 23502 07	FOR MODEL W1-145V	
	EY227 23502 07	FOR MODEL W1-185V	
		.020" (0.50mm) OVERSIZE RING SET	
	EY226 23503 07	FOR MODEL W1-145V	
	EY227 23503 07	FOR MODEL W1-185V	
9	- - - - -	PISTON, STANDARD SIZE	1
	EY226 23401 03	FOR MODEL W1-145V	
	EY227 23401 03	FOR MODEL W1-185V	



6. CRANKSHAFT, CAMSHAFT, PISTON, ROD AND VALVE GROUP

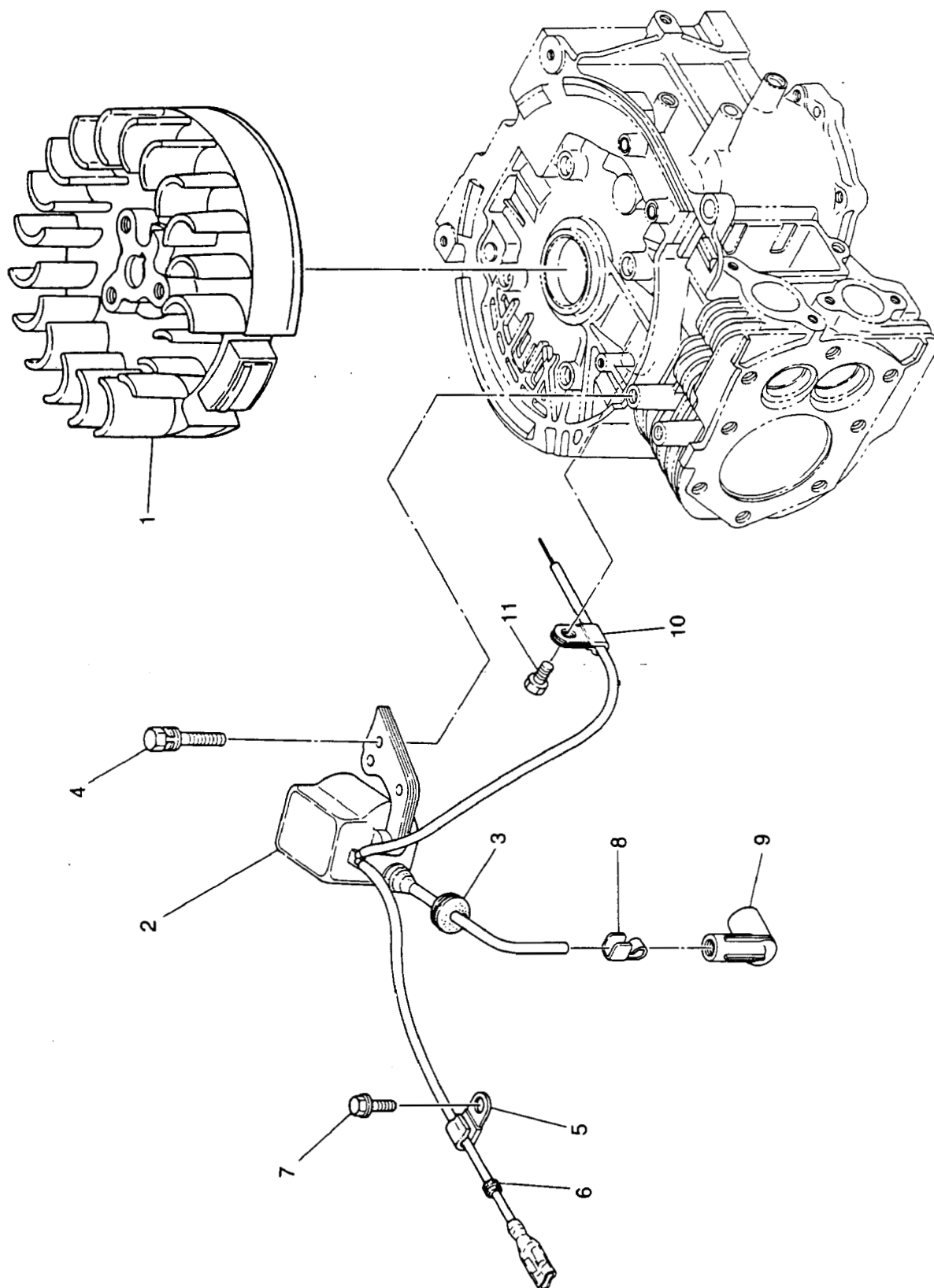
REF. NO.	PART NO.	DESCRIPTION.	QTY.
6-9	- - - - -	PISTON .010" (0.25mm) OVERSIZE FOR MODEL W1-145V FOR MODEL W1-185V .020" (0.50mm) OVERSIZE PISTON	
	EY226 23402 03	FOR MODEL W1-145V	
	EY227 23402 03	FOR MODEL W1-185V	
	EY226 23403 03	FOR MODEL W1-145V	
	EY227 23403 03	FOR MODEL W1-185V	
6-10	EY214 23301 03	PIN, PISTON	1
11	EY056 51400 10	SNAP RING, PISTON PIN	2
12	- - - - -	CONNECTING ROD, ASSY. (Includes items 13 & 14)	1
	EY226 22503 00	FOR MODEL W1-145V	
	EY227 22503 00	FOR MODEL W1-185V	
13	- - - - -	LOCK PLATE	1
	EY205 23201 03	FOR MODEL W1-145V	
	EY227 23202 03	FOR MODEL W1-185V	
14	- - - - -	ROD BOLT	2
	EY226 23001 03	FOR MODEL W1-145V	
	EY227 23001 03	FOR MODEL W1-185V	
	EY226 22504 00	.020" (0.50mm) UNDERSIZE CONNECTING ROD	
15	- - - - -	CAMSHAFT ASSY.	1
	EY226 31701 03	FOR MODEL W1-145V	
	EY227 31701 03	FOR MODEL W1-185V	
16	EY226 45201 01	GOVERNOR GEAR ASSY. (Includes items 17,18 & 19)	1
17	X X X X X X X	FLYWEIGHT	2
18	X X X X X X X	FLYWEIGHT PIN	2
19	EY205 41901 03	GOVERNOR SLEEVE	1
20	- - - - -	INTAKE VALVE	1
	EY226 33401 03	FOR MODEL W1-145V	
	EY227 33402 03	FOR MODEL W1-185V	
21	- - - - -	EXHAUST VALVE	1
	EY226 33501 03	FOR MODEL W1-145V	
	EY227 33501 03	FOR MODEL W1-185V	
22	EY227 33601 03	VALVE SPRING	2
23	EY227 33701 03	RETAINER, VALVE SPRING	2
24	- - - - -	VALVE TAPPET	2
	EY226 33301 03	FOR MODEL W1-145V	
	EY227 33301 03	FOR MODEL W1-185V	



7. FLYWHEEL BRAKE GROUP

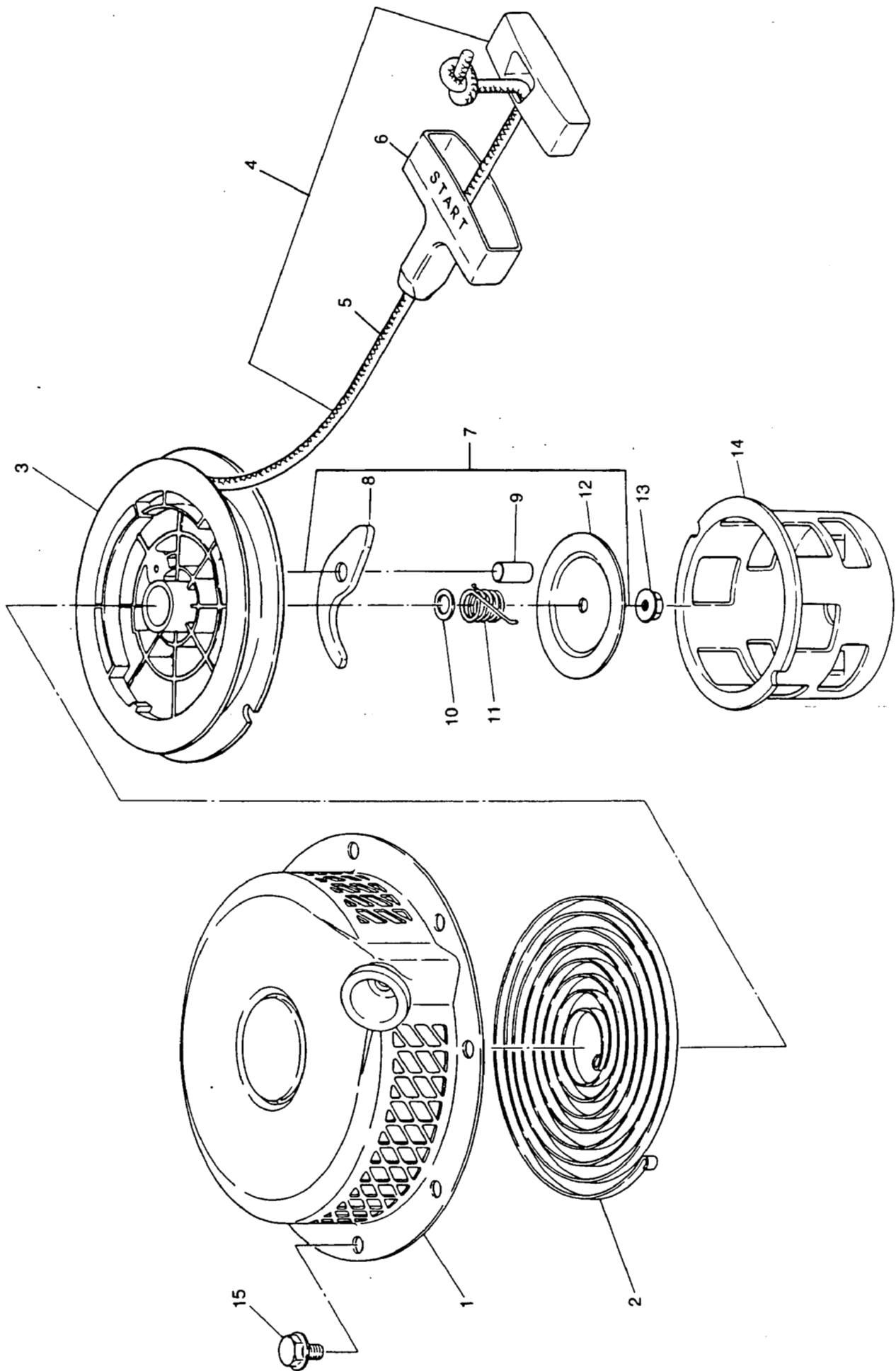


REF. NO.	PART NO.	DESCRIPTION	QTY.
7-1	EY226 86006 00	FOR W1-145V ONLY BRAKE HOLDER ASSY.	1
	EY226 86005 00	BRAKE ASSY. (Includes items 3,4,5,6,7,8, 12,13,14 & 15)	1
2	EY004 35041 20	SCREW	1
3	EY226 86006 01	BRAKE SHOE	2
4	EY226 86101 01	RETURN SPRING	1
5	EY003 13060 00	CLIP	1
6	EY001 65061 80	BOLT	4
7	EY003 20060 00	LOCK WASHER	4
8	EY020 00600 70	WASHER	4
9	EY226 72703 11	STOP SWITCH	1
10	EY020 00400 20	WASHER	1
11	EY004 36040 80	SCREW/WASHER ASSY.	2
12	EY226 86105 01	BRAKE SPRING	1
13	EY001 65081 60	BOLT	1
14	EY003 20080 00	LOCK WASHER	1
15	EY003 11080 00	WASHER	1
16	EY023 00400 00	SPACER	2
17	EY226 77601 03	STOP SWITCH COVER	1



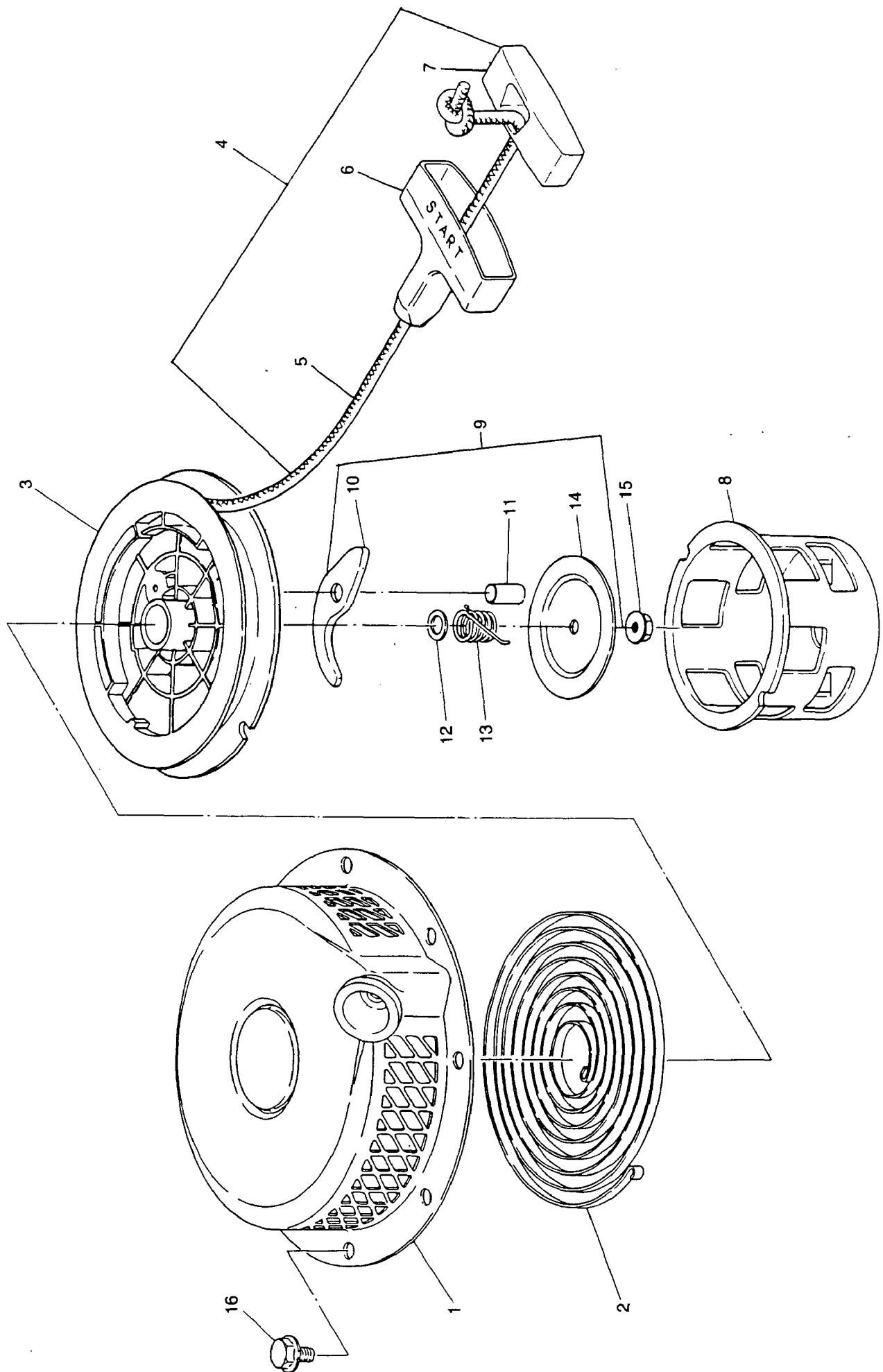
8. IGNITION GROUP

REF. NO.	PART NO.	DESCRIPTION	QTY.
8-1	EY226 70123 08	FLYWHEEL, (W1-145V)	1
	EY227 70120 08	FLYWHEEL, (W1-185V)	1
2	- - - - -	IGNITION COIL ASSY.	1
	EY226 70142 08	FOR MODEL W1-145V	
	EY227 70143 08	FOR MODEL W1-185V	
3	EY226 70245 08	GROMMET	1
4	EY001 17062 50	SCREW/WASHER, IGNITION COIL MOUNTING, 6mm x 25mm LONG HEX HEAD	1
5	EY214 79006 01	CLAMP, GROUND WIRE	2
6	EY226 70246 08	GROMMET, SPARK PLUG WIRE	1
7	EY013 00601 10	SCREW, GROUND WIRE CLAMP 6mm x 8mm, LONG HEX FLANGE HEAD	2
8	EY065 50001 00	TERMINAL, SPARK PLUG WIRE	1
9	EY230 75101 13	CAP, SPARK PLUG TERMINAL	1
10	EY056 60500 10	CLAMP	1
11	EY001 65081 20	BOLT	1



9. RECOIL STARTER ASSY. (WI-145V ONLY)

REF. NO.	PART NO.	DESCRIPTION	QTY.
		ITEMS 1-15 ARE FOR W1-145V MODEL ONLY	
9-1	EY226 50915 10	RECOIL STARTER, COMPLETE	1
	X X X X X X X	HOUSING	1
2	EY215 50515 08	POWER SPRING	1
3	EY226 50121 08	REEL	1
4	EY226 50108 08	ROPE, ASSY. (Includes items 5 & 6)	1
5	X X X X X X X	ROPE	1
6	X X X X X X X	HANDLE	1
7	EY227 50102 07	HARDWARE KIT, RECOIL STARTER (Includes items 8-12)	1
8	X X X X X X X	RATCHET	1
9	X X X X X X X	RATCHET PIN	1
10	X X X X X X X	THRUST WASHER	1
11	X X X X X X X	FRICTION SPRING	1
12	X X X X X X X	FRICTION PLATE	1
13	X X X X X X X	NUT	1
14	EY215 50545 08	PULLEY, STARTING	1
15	EY011 00600 10	SCREW, RECOIL STARTER MOUNTING, 6mm x 8mm LONG, HEX FLANGE HEAD	4



10. RECOIL STARTER ASSY. (WI-185V ONLY)

REF. NO.	PART NO.	DESCRIPTION	QTY.
		ITEMS 1-15 ARE FOR W1-185V MODEL ONLY	
10-1	EY227 50406 00	RECOIL STARTER, COMPLETE	1
	X X X X X X X	HOUSING	1
2	EY215 50515 08	POWER SPRING	1
3	EY226 50121 08	REEL	1
4	EY226 50108 08	ROPE ASSEMBLY (Includes items 5-7)	1
5	X X X X X X X	ROPE	1
6	X X X X X X X	HANDLE	1
7	X X X X X X X	REINFORCEMENT	
8	EY227 50147 08	PULLEY, STARTING	1
9	EY227 50102 07	HARDWARE KIT, RECOIL STARTER (Includes items 10-14)	1
10	X X X X X X X	RATCHET	1
11	X X X X X X X	RATCHET PIN	1
12	X X X X X X X	THRUST WASHER	1
13	X X X X X X X	FRICTION SPRING	1
14	X X X X X X X	FRICTION PLATE	1
15	X X X X X X X	FLANGE NUT	1
16	EY011 00600 10	SCREW, RECOIL STARTER MOUNTING, 6mm x 8mm LONG, HEX FLANGE HEAD	4