

Bill Bergeron

Subject: 263-71902-A1 30Amp Regulator (Before & After) 02-06-2019
Attachments: 2019_02_06_09_08_09.pdf; 263-71902-A1.jpg

From: Yoshitaka Tanabe <ytanabe@subarupower.com>
Sent: Wednesday, 06 February, 2019 9:18 AM
To: Rich Tranter <rtranter@subarupower.com>; Mark Failauga <mfailauga@subarupower.com>
Cc: Bill Bergeron <bbergeron@subarupower.com>
Subject: 263-71902-A1 Regulator (Before & After)

So, you might continue hearing from the customers like, *"hey, I got your regulator delivered, but it looks way different. Did you guys ship the right one?"*

It is the replaceable with no problem. You can pass the attached if someone asked the detail.

In sum, the reason of changes are:

- ✓ Old spec's diecasting's die got so old, it's needed to replace.
- ✓ Taking that opportunity, they added more fins to improve the cooling performance.
- ✓ Also, per the supplier, they improved other electrical performance.

Sincerely,

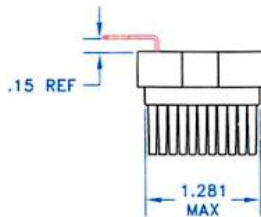
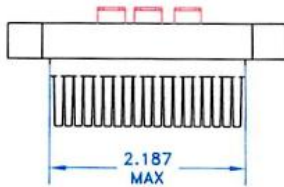
Yoshi Tanabe | Operations Manager
Industrial Power Products of America, Inc. (Former Robin America, Inc.)
(DBA Subaru Industrial Power Products <http://www.subarupower.com>)
Address: 10801 88th Avenue, Pleasant Prairie, WI 53158 Phone: (847) 847-2952



1280CP
PART NO.

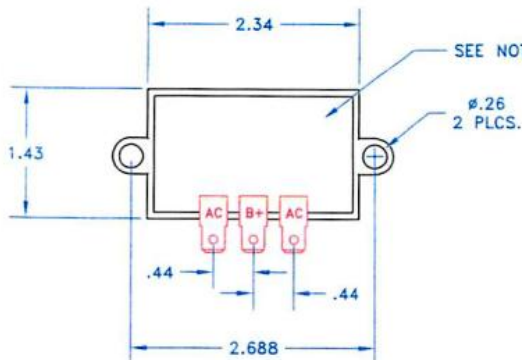
DO NOT SCALE DRAWING

THE DESIGN AND TECHNICAL INFORMATION APPEARING ON THIS DRAWING OR TECHNICAL SPECIFICATION IS THE PROPERTY OF SYNCRO CORPORATION AND IS PROVIDED IN CONFIDENCE. IT IS NOT TO BE COPIED, REPRODUCED OR DISCLOSED TO OTHERS, EITHER IN WHOLE OR IN PART, WITHOUT PRIOR WRITTEN CONSENT OF SYNCRO CORPORATION.



DATE CODE STICKER LOCATION
JULIAN DATE CODE WITH REV LEVEL
EXAMPLE: 272A17

DAY
SYNCRO PART REV
YEAR



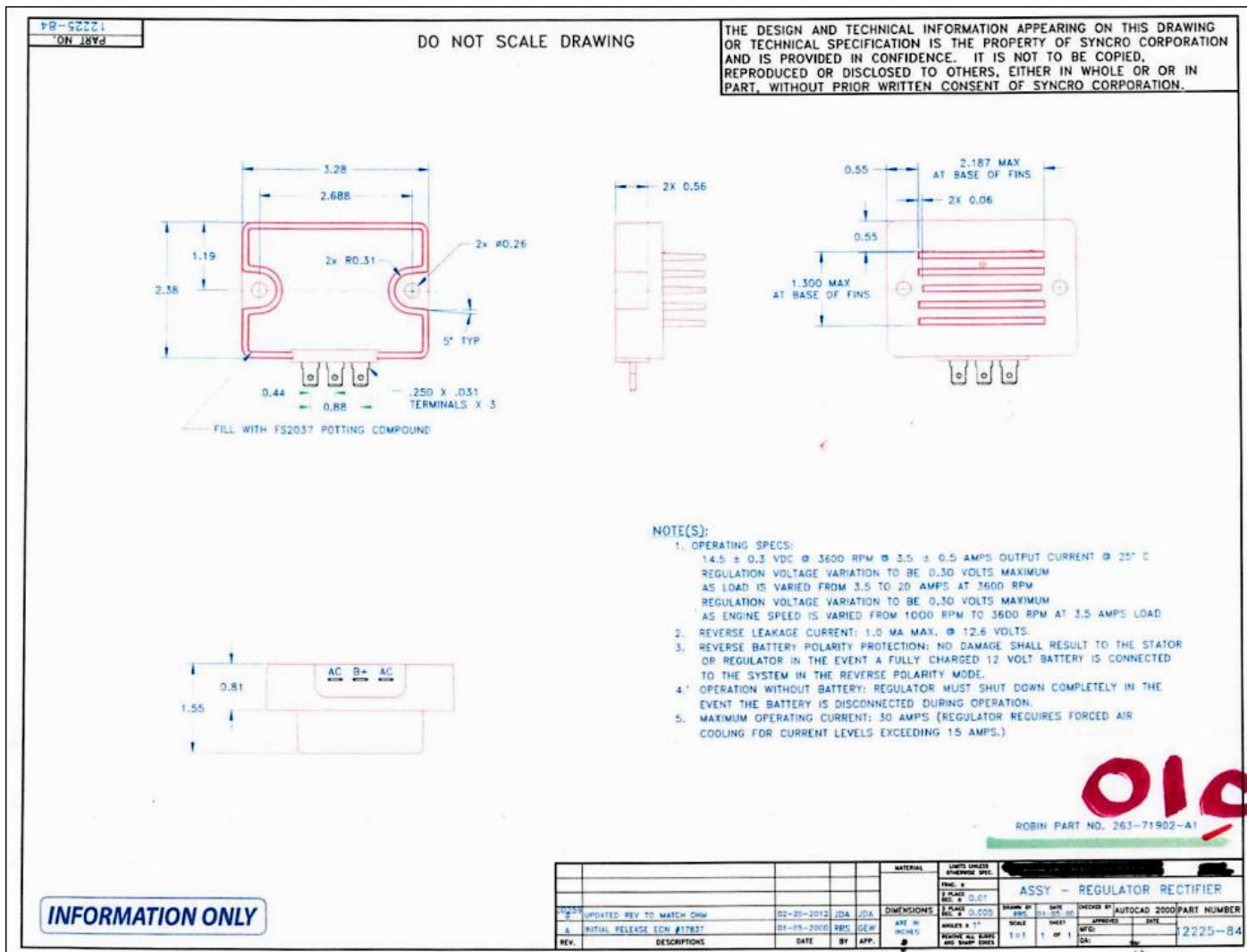
OPERATING SPECIFICATIONS:

1. VOLTAGE @ REGULATION = 14.0 TO 14.60 VDC @ 3.5 AMPS @ 70°F.
2. REVERSE LEAKAGE CURRENT = 1 MILLIAMP MAXIMUM @ 12.6 VDC @ 70°F.
3. REGULATOR IS PROTECTED AGAINST REVERSE BATTERY POLARITY. NO DAMAGE TO OCCUR TO REGULATOR IF BATTERY IS CONNECTED IN REVERSE POLARITY.
4. REGULATOR TO SHUT DOWN IN THE EVENT THAT THE BATTERY IS DISCONNECTED DURING OPERATION.
5. REGULATOR TO BE FILLED FLUSH TO TOP OF HOUSING WITH POTTING COMPOUND. MINOR VOIDS ON THE SURFACE ARE ALLOWED.
6. MAXIMUM OPERATING CURRENT 30 AMPS. REGULATOR REQUIRES FORCED AIR COOLING ACROSS THE FINS DURING OPERATION WITH A MINIMUM OF 7 METERS PER SECOND AT 30 AMPS.

New

CUSTOMER PART NUMBER 26371902A1

						MATERIAL		LIGHT WEIGHT STANDARD SPEC.		REGULATOR CORPORATION			
								1. POWER		REGULATOR FULLWAVE 2016			
								2. POWER					
								3. POWER					
								4. POWER					
								5. POWER					
								6. POWER					
								7. POWER					
								8. POWER					
								9. POWER					
								10. POWER					
								11. POWER					
								12. POWER					
								13. POWER					
								14. POWER					
								15. POWER					
								16. POWER					
								17. POWER					
								18. POWER					
								19. POWER					
								20. POWER					
								21. POWER					
								22. POWER					
								23. POWER					
								24. POWER					
								25. POWER					
								26. POWER					
								27. POWER					
								28. POWER					
								29. POWER					
								30. POWER					
								31. POWER					
								32. POWER					
								33. POWER					
								34. POWER					
								35. POWER					
								36. POWER					
								37. POWER					
								38. POWER					
								39. POWER					
								40. POWER					
								41. POWER					
								42. POWER					
								43. POWER					
								44. POWER					
								45. POWER					
								46. POWER					
								47. POWER					
								48. POWER					
								49. POWER					
								50. POWER					
								51. POWER					
								52. POWER					
								53. POWER					
								54. POWER					
								55. POWER					
								56. POWER					
								57. POWER					
								58. POWER					
								59. POWER					
								60. POWER					
								61. POWER					
								62. POWER					
								63. POWER					
								64. POWER					
								65. POWER					
								66. POWER					
								67. POWER					
								68. POWER					
								69. POWER					
								70. POWER					
								71. POWER					
								72. POWER					
								73. POWER					
								74. POWER					
								75. POWER					
								76. POWER					
								77. POWER					
								78. POWER					
								79. POWER					
								80. POWER					
								81. POWER					
								82. POWER					
								83. POWER					
								84. POWER					
								85. POWER					
								86. POWER					
								87. POWER					
								88. POWER					
								89. POWER					
								90. POWER					
								91. POWER					
								92. POWER					
								93. POWER					
								94. POWER					
								95. POWER					
								96. POWER					
								97. POWER					
								98. POWER					
								99. POWER					
								100. POWER					
								101. POWER					
								102. POWER					
								103. POWER					
								104. POWER					
								105. POWER					
								106. POWER					
								107. POWER					
								108. POWER					
								109. POWER					
								110. POWER					
								111. POWER					
								112. POWER					
								113. POWER					
								114. POWER					
								115. POWER					
								116. POWER					
								117. POWER					
								118. POWER					
								119. POWER					
								120. POWER					
								121. POWER					
								122. POWER					
								123. POWER					
								124. POWER					
								125. POWER					
								126. POWER					
								127. POWER					
								128. POWER					
								129. POWER					
								130. POWER					
								131. POWER					
								132. POWER					
								133. POWER					
								134. POWER					
								135. POWER					
								136. POWER					
								137. POWER					
								138. POWER					
								139. POWER					
								140. POWER					
								141. POWER					
								142. POWER					
								143. POWER					
								144. POWER					
								145. POWER					
								146. POWER					
								147. POWER					
								148. POWER					
								149. POWER					
								150. POWER					
								151. POWER					
								152. POWER					
								153. POWER					
								154. POWER					
								155. POWER					
								156. POWER					
								157. POWER					
								158. POWER					
								159. POWER					
								160. POWER					
								161. POWER					
								162. POWER					
								163. POWER					
								164. POWER					
								165. POWER					
								166. POWER					
								167. POWER					
								168. POWER					
								169. POWER					
								170. POWER					
								171. POWER					
								172. POWER					
								173. POWER					
								174. POWER					
								175. POWER					
								176. POWER					
								177. POWER					
								178. POWER					
								179. POWER					
								180. POWER					
								181. POWER					
								182. POWER					
								183. POWER					
								184. POWER					
								185. POWER					
								186. POWER					
								187. POWER					
								188. POWER					
								189. POWER					
								190. POWER					
								191. POWER					
								192. POWER					
								193. POWER					
								194. POWER					
								195. POWER					
								196. POWER					
								197. POWER					
								198. POWER					
								199. POWER					
								200. POWER					
								201. POWER					
								202. POWER					
								203. POWER					
								204. POWER					
								205. POWER					
								206. POWER					
								207. POWER					
								208. POWER					
								209. POWER					
								210. POWER					
								211. POWER					
								212. POWER					
								213. POWER					
								214. POWER					
								215. POWER					
								216. POWER					
								217. POWER					
								218. POWER					
								219. POWER					
								220. POWER					
								221. POWER					
								222. POWER					
								223. POWER					
								224. POWER					
								225. POWER					
								226. POWER					
								227. POWER					
								228. POWER					
								229. POWER					
								230. POWER					
								231. POWER					
								232. POWER					
								233. POWER					
								234. POWER					
								235. POWER					
								236. POWER					
								237. POWER					
								238. POWER					
								239. POWER					



This message is confidential. It may also be privileged or otherwise protected by work product immunity or other legal rules. If you have received it by mistake, please let us know by e-mail reply and delete it from your system; you may not copy this message or disclose its contents to anyone. The integrity and security of this message cannot be guaranteed on the Internet.